

THE ULTIMATE DEFENSE

FOR YOUR OPERATION

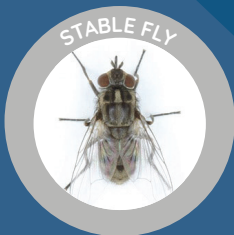


Introducing ClariFly® Larvicide Top-Dress Fly Control

ClariFly® Larvicide Top-Dress Fly Control helps prevent the emergence of adult house flies, stable flies, face flies, and horn flies from manure of treated beef and dairy cattle, breeding stock, and show animals. This top-dress supplement also prevents the emergence of house flies and stable flies from the manure of treated sheep, goats, equine and swine.



FIGHT FOUR TYPES OF FLIES



House flies, stable flies, face flies and horn flies are pervasive and resilient pests. Make the most of your control efforts by incorporating ClariFly® Larvicide Top-Dress Fly Control into your integrated pest management (IPM) program. The ideal program incorporating Starbar® products will hit flies where they breed and can help reduce populations to manageable levels. Existing adult flies will not be affected. Start feeding before flies appear and continue use until cold weather marks the end of the fly season.

FEATURES

- The active ingredient Diflubenzuron
- ClariFly® Larvicide branded products are the only diflubenzuron based products approved for five species: beef & dairy cattle, swine, equine, sheep and goats
- Recommended use for show animals and smaller operations

FEATURES & BENEFITS

BENEFITS


- Prevents the emergence of adult house flies, stable flies, face flies, and horn flies from the manure of treated cattle
- Prevents the emergence of house flies and stable flies from the manure of treated sheep, goats, equine and swine
- Can be used as part of an integrated pest management program




Always read and follow label instructions. ClariFly, ClariFly Larvicide with design, Starbar, and Starbar with design are registered trademarks of Wellmark International. ©2023 Wellmark International. FR 23-005

DOSAGE RATES


Feeding Directions for Confined Beef and Dairy Cattle: Top-dress ClariFly® Larvicide Top-Dress Fly Control with the ration to provide 0.1 mg Diflubenzuron/kg of body weight. For larger cattle, over 1,500 lbs of body weight, feed an additional 1.0 ounce for each additional 250 lbs of body weight.

SPECIES	BODY WT(lbs)	CLARIFLY® LARVICIDE (oz)/per day
 CATTLE	Up to 250	1.0
	251 - 500	2.0
	501 - 750	3.0
	751 - 1,000	4.0
	1,001 - 1,250	5.0
	1,251 - 1,500	6.0


Feeding Directions for Equine: Top-dress ClariFly® Larvicide Top-Dress Fly Control with the ration to provide 0.15 mg Diflubenzuron/kg of equine body weight. For larger horses, over 1,500 lbs of body weight, feed an additional 1.5 ounces for each additional 250 lbs of body weight.

SPECIES	BODY WT(lbs)	CLARIFLY® LARVICIDE (oz)/per day
 EQUINE	Up to 250	1.5
	251 - 500	3.0
	501 - 750	4.5
	751 - 1,000	6.0
	1,001 - 1,250	7.5
	1,251 - 1,500	9.0

Feeding Directions for Swine: Top-dress ClariFly® Larvicide Top-Dress Fly Control with the ration to provide 0.2 mg Diflubenzuron/kg of animal body weight to 0.3 mg Diflubenzuron/kg of body weight. For larger swine, over 500 lbs of body weight, feed an additional 1.5 ounces for each additional 125 lbs of body weight.

SPECIES	BODY WT(lbs)	CLARIFLY® LARVICIDE (oz)/per day
 SWINE	Up to 50	0.4
	51 - 100	0.8
SWINE OVER 100lbs	101 - 125	1.5
	126 - 250	3.0
	251 - 375	4.5
	376 - 500	6.0

Feeding Directions for Sheep and Goats: Top-dress ClariFly® Larvicide Top-Dress Fly Control with the ration to provide 0.4 mg Diflubenzuron/kg of body weight. For larger sheep and/or goats, over 250 lbs of body weight, feed an additional 0.8 ounces for each additional 50 lbs of body weight

SPECIES	BODY WT(lbs)	CLARIFLY® LARVICIDE (oz)/per day
 SHEEP AND GOATS	Up to 50	0.8
	51-100	1.6
	101-150	2.4
	151-200	3.2
	201-250	4.0

To get ClariFly® Larvicide Top-Dress Fly Control, contact your Central Life Sciences representative or visit your local farm supply store. For more information, or help starting an IPM program, visit StarbarProducts.com.

